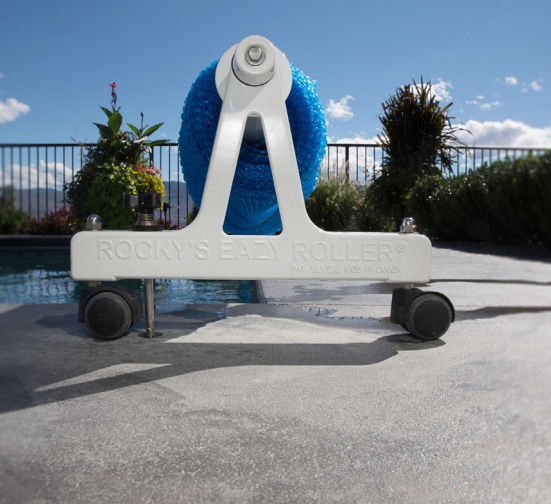


Rocky's Product Catalog

For over 40 years, Rocky's has been building the most durable solar cover reels & roller systems on the market.



ROCKY'S
Quality pool cover reel systems

PEOPLE, PRODUCTS, PRICES

Rocky's is a family run company that has been manufacturing the highest quality swimming pool reel systems and products since 1976. Our head office is located in the beautiful Okanagan Valley in British Columbia, Canada.

Our products are proudly made in North America, using only the highest quality materials. If you would like to find out more about our company or products, please feel free to contact us anytime.

Rocky's is a global supplier and has been working with the largest pool supply distributor networks world wide for over 40 years. From India to Mexico to Italy to New Zealand (to name just a few), our quality products are sought after around the globe.

Rocky's is fully capable of exporting any sized order for International customers. If you are interested in distributing the Rocky's brand in your area, please contact us directly for details. 1-800-663-8705 or info@rockys.ca





Part: 305

3 Portable

PART # 305

The 3 Portable Reel System uses 4" hubs and 4" tubing, making it capable of smoothly rolling a longer solar cover. It is designed for use as a portable unit. Ground clearance to the underside of tubing is approximately 9". For use on pools up to 24' x 45'. Compatible with Rocky's 4 Inch Adjustable Tubing or Commercial Tubing.

Additional information: page 28-29



Part: 307

3A Portable

PART # 307

The 3A Portable Reel System is for the typical backyard pool. Comes with 2" wheels for easy maneuvering. Ground clearance to underside of tubing is approximately 9.5". For use on pools up to 24' x 45'. Compatible with Rocky's AT-1 (Part 323) and AT-2 (Part 325) Tubing.

Additional information: page 30-32



Part: 307CC

3A Portable Clear Coat

PART # 307CC

The popular 3A Portable Reel System now in a clear coat for a sleek industrial look that compliments concrete pool decking. Comes with 2" wheels for easy maneuvering. Ground clearance to underside of tubing is approximately 9.5". For use on pools up to 24' x 45'. Compatible with Rocky's AT-1 (Part 323) and AT-2 (Part 325) Tubing.

Additional information: page 30-32



Part: 313

4 Permanent

PART # 313

The 4 Permanent Reel System is designed to be bolted into place making it our most versatile system as it can be secured to numerous surfaces such as walls, raised decking or under a diving board. Popular with above ground pool and fitness pool owners. Ground clearance to the underside of the tubing is approximately 6.5". For use on pools up to 24' x 35'. Compatible with Rocky's 4 Inch Adjustable Tubing or Commercial Tubing.

Additional information: page 33-34





Part: 309

4A Permanent

PART # 309

The 4A Permanent Reel System is designed to be bolted into place making it our most versatile system as it can be attached to numerous surfaces such as walls, raised decking or under a diving board. Popular with above ground pool and fitness pool owners. Ground clearance to the underside of the tubing is approximately 6.75". For use on pools up to 24' x 40'. Compatible with Rocky's AT-1 (Part 323) and AT-2 (Part 325) Tubing.

Additional information: page 35-37



Part: 309CC

4A Permanent Clear Coat

PART # 309CC

Now in a Clear Coat for a modern industrial design the 4A Permanent Reel System is designed to be bolted into place making it our most versatile system as it can be mounted to numerous surfaces such as walls, raised decking or under a diving board. Popular with above ground pool and fitness pool owners. Ground clearance to the underside of the tubing is approximately 6.75". For use on pools up to 24' x 40'. Compatible with Rocky's AT-1 (Part 323) and AT-2 (Part 325) Tubing.

Additional information: page 35-37



Part: 315

5 Portable

PART # 315

The 5 Portable Reel System is the largest and most robust of Rocky's Residential Systems. It is designed for use as a portable unit and to handle a thicker, heavier cover. The 5 has a longer handle and 4" locking wheels to support its sturdy design. Ground clearance to underside of tubing is approximately 10.5". For use on pools up to 24' x 60'. Compatible with Rocky's 4 Inch Adjustable Tubing or Commercial Tubing.

Additional information: page 38-39



Part: 317

5A Portable

PART # 317

The 5A Portable Reel System uses Rocky's 3 Inch Adjustable Tubing. The 5A has a longer handle and 4" locking wheels to support its sturdy design. Ground clearance to the underside of the tubing is approximately 10.75". For use on pools up to 24' x 65'. Compatible with Rocky's AT-1 (Part 323) and AT-2 (Part 325) Tubing.

Additional information: page 40-41





Part: 318

High Riser Residential

PART # 318

The High Riser Residential has the highest deck clearance out of all Rocky's Residential Systems. The longer handle and higher profile make this unit excellent for pool owners that don't want to have to bend over to reel in their solar cover or for larger residential pool applications. Ground clearance to the underside of the tubing is approximately 26.5". For use on pools up to 24' x 90'. Compatible with Rocky's AT-1 (Part 323) and AT-2 (Part 325) Tubing.

Additional information: page 42-44



Part: 323

AT-1 Tube

PART # 323

The Adjustable Tube 1 is designed to work with the 3A, 4A and 5A Residential Systems. The AT-1 Tube adjusts from 15 feet to 21 feet giving it the ability to fit any residential pool up to 20 feet wide.

We recommend the tube be a foot wider than the pool. This ensures you won't have wheels hanging into the pool and that the cover won't catch on the end units.

Additional information: page 45



Part: 325

AT-2 Tube

PART # 325

The Adjustable Tube 2 is a longer version of the AT-1 Tube. The AT-2 Tube adjusts from 17 feet to 25 feet giving it the ability to fit any residential pool up to 24 feet wide. The AT-2 also has a bigger tensioning system to ensure that it does not sag. For use on pools up to 24' wide. Compatible with Rocky's 3A, 4A, 5A and High Riser Residential Systems. We recommend the tube be a foot wider than the pool. This ensures you won't have wheels hanging into the pool and that the cover won't catch on the end units.

Additional information: page 46



Part: 327

4 Inch Adjustable Tube

PART # 327

Rocky's 4 Inch Adjustable Tubing is for use with the 3, 4 and 5 Residential Reel Systems. It is a 4 inch diameter tube that is similar in design to the AT-1 and AT-2. The 4 Inch Tubing can adjust from 16' up to 23'. It is ideal for heavier covers or pool owners that want a more robust tube. For use on pools up to 22' wide.

Additional information: page 47



3" Motor Kit



PART # 300

Rocky's 3" Motor Kit is designed to fit into our 3" Adjustable Tubing. This means that the motor can be retrofitted onto any existing Rocky's reel using our AT-1 or AT-2 tube. The motor can be used on pools that are up to 20' wide by 40' long. It provides 20 NM of force and the battery can last about 2 months on a full charge using it twice a day.

Specifications

- Long lasting Battery
- Remote Controlled
- Detailed video instructions available
- Can still be manually operated
- 1 year Manufacturers Warranty
- Assembled in Canada
- Weighs 8 lb.
- Works on pools up to 20' x 40'
- Durable Construction
- Charges fully in twelve hours
- Water resistant
- Uses LifePO4 Batteries
- Ships in one box 36"x 6"x 6"



Part: 319

Junior

PART # 319

The Junior is the smallest of Rocky's Commercial Systems. It is designed for use as a portable unit and has a third leg with additional wheel for extra stability. The Junior uses Rocky's 12 sided, 4" anodized Commercial Tubing. Ground clearance to underside of tubing is approximately 11". For use on pools up to 32' x 85'. Compatible with Rocky's 4" Commercial Tubing which can be ordered in any length up to 33'.

Additional information: page 43-44



Part: 321

Senior

PART # 321

The Senior is the most popular of Rocky's Commercial Systems, it is designed to handle large covers up to 100' long. It comes with Rocky's high quality 4" locking wheels, so it can be easily moved pool side. Ground clearance to the underside of the tubing is approximately 14". For use on pools up to 32' x 100'. Compatible with Rocky's 4" Commercial Tubing which can be ordered in any length up to 33'.

Additional information: page 46-47



Part: 318-C

High Riser Commercial

PART # 318-C

The High Riser has the highest deck clearance out of all Rocky's Commercial Reel Systems and is designed to clear obstacles on the pool deck. This unit is excellent for facilities with people that don't want to have to bend over to reel in their cover. For the best performance Rocky's recommends using a tube that does not surpass 25' in length. Ground clearance to the underside of the tubing is approximately 26.75". For use on pools up to 24' x 100'. Compatible with Rocky's 4" Commercial Tubing which can be ordered in any length up to 25'.

Additional information: page 48-49



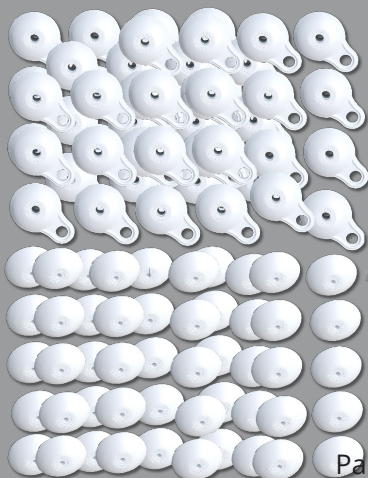
Parts: 332-349

4 Inch Commercial Tube

PART # 332-349

Rocky's heavy duty, 4" Commercial Tubing is designed to work with all of Rocky's Commercial Systems. This high quality tubing is anodized and uses a 12 sided design to increase the strength and lateral integrity. Rocky's 4" Commercial Tubing can be custom cut to fit any pool shape and size. For use on pools up to 33' wide and is compatible with Rocky's Commercial Reel Systems. Weight, dimensions and part numbers for specific lengths available on Page 50.





Part: 553

50 Grommet Pack

50 complete Grommets. Ideal size for installers and pool maintenance companies. If you're changing a cover you need to change the grommets too.

CODE

553

ITEM

50 Grommet Pack

Shipping Dimensions 4 lb.

13"x 8"x 2"

Made in Canada

Case quantity= 30



Part: 554

100 Grommet Pack

Universal part for all Rocky's systems used to attach a cover to our Strapping. Can be used to refill the Grommet Display Box (part 554). The biggest bulk pack Rocky's offers.

CODE

554

ITEM

100 Grommet Pack

Shipping Dimensions 6 lb.

18"x 8"x 3"

Made in Canada

Case quantity= 10



Part: 555

Bushing and Washer (2 sets)

Universal part for all Rocky's systems. If you have a reel that is not turning check these parts first. Rocky's recommends greasing the Bushing with a waterproof grease at least once a year. If the Bushing is cracked make sure to replace it to keep your reel turning smoothly.

CODE

555

ITEM

Bushing and Washer (2 sets)

Shipping Dimensions 1 lb.

6"x 3.5"x 2"

Made in Canada

Case quantity= 50



Part: 577

Universal Strap Kit

Universal part that is compatible with any reel system on the market. Rocky's Strapping is coated in vinyl making it outlast the competition's. The Strapping and Grommet quantities are the same as our residential units, making this an ideal replacement kit.

CODE

577

ITEM

Universal Strap Kit

Shipping Dimensions 2 lb.

15"x 4"x 2"

Made in Canada

Case quantity= 50





Part: 589

36' Strapping

36 feet of Strapping. The exact size we put in the box for the 5, 5A, Junior, Senior and High Riser Systems. Ideal for when its time to replace a cover.

CODE

589

ITEM

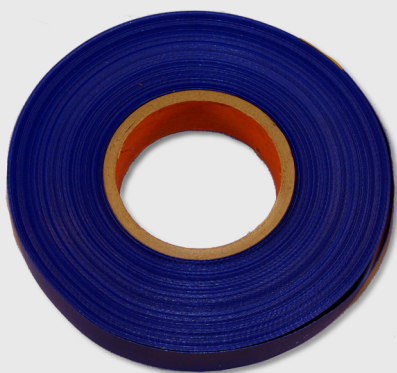
36' Strapping

Shipping Dimensions 1 lb.

8"x 4"x 2"

Made in Canada

Case quantity= 50



Part: 591

150' Strapping

150 linear feet of Rocky's Strapping. Ideal for pool maintenance companies, retailers and installers. Also good for shops that sell individual Grommets.

CODE

591

ITEM

150' Strapping

Shipping Dimensions 10 lb.

10"x 9"x 2"

Made in Canada

Case quantity= 20



Part: 593

18" Velcro

Enough Velcro to attach 9 straps to a Solar Reel System. This is ideal if you want to remove your reel when the cover is on the pool. Unroll it, unhook it and roll it away!

CODE

593

ITEM

18" Velcro

Shipping Dimensions 1 lb.

4"x 4"x 2"

Made in Canada

Case quantity= 50



Part: 594

4 Shim Kit

A pair of half inch Shims and longer Bolts originally designed for the 4 and 4A Systems to provide more height. They can be stacked up to three high to obtain more clearance in a permanently mounted setting where space is a commodity. Can also be used to add extra height to the Senior System.

CODE

594

ITEM

4 Shim Kit

Shipping Dimensions 5 lb.

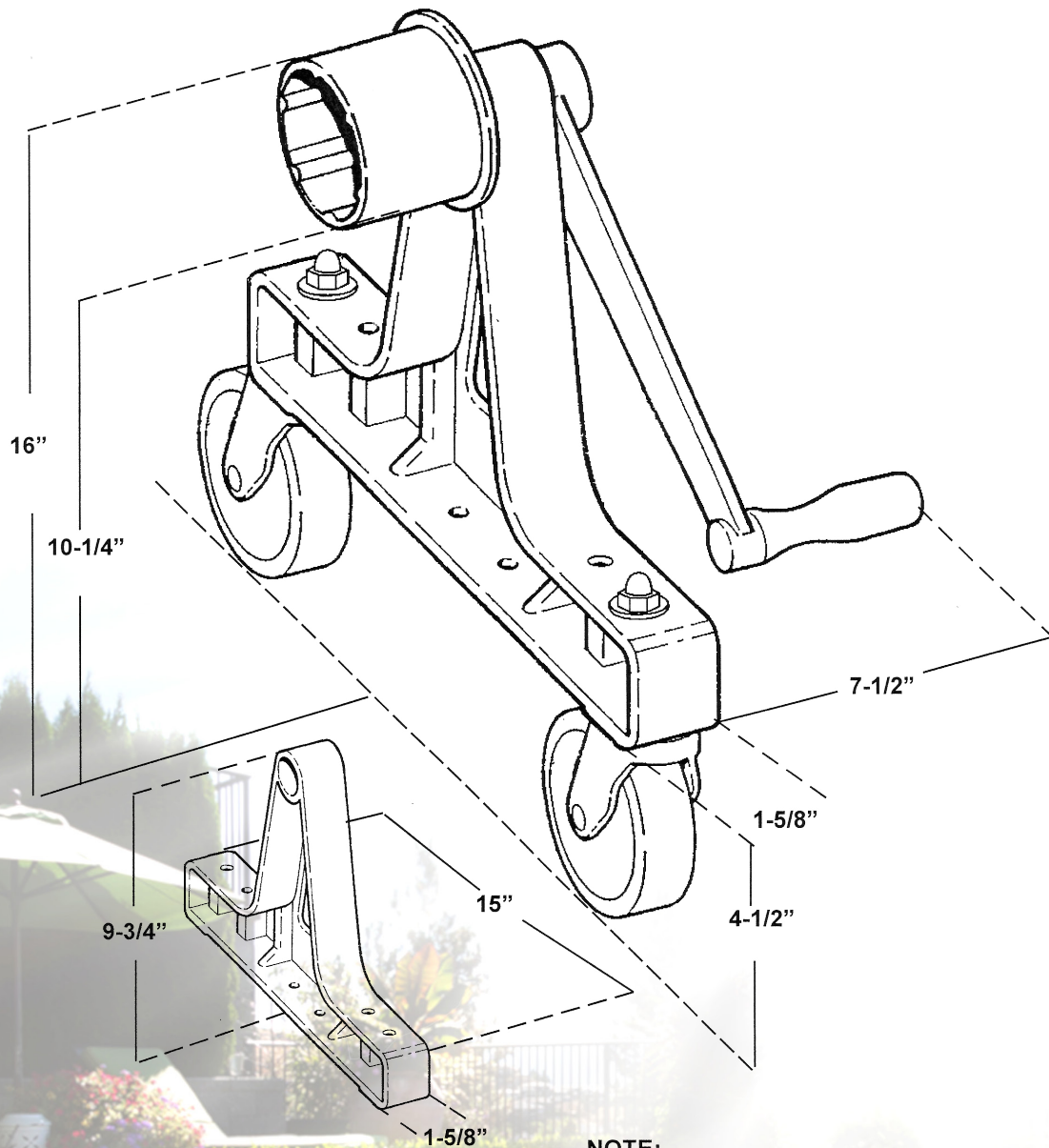
8"x 4"x 2"

Made in Canada

Case quantity= 50



5 Portable



NOTE:

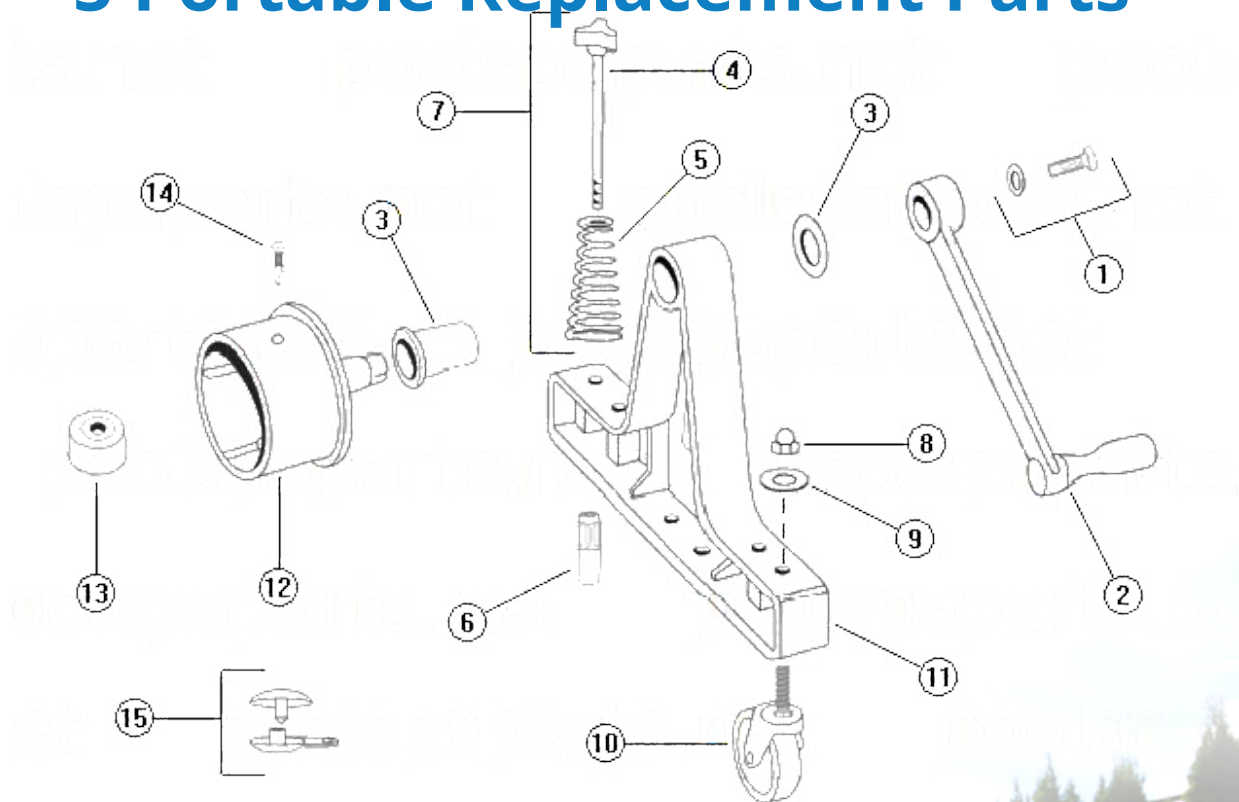
All sizing is approximate.
Wheels might differ from those shown.

5 Portable Solar Reel – Product Specifications

- Strong Die Cast Aluminum Construction
- Positive Anchoring System
- Easy To Use
- Light Weight Yet Extremely Strong
- Not Affected By Sunlight Or Freezing Cold
- Not Plastic
- Ten Year Warranty
- Weight: 16 lb.
- Ships in a single box: 18"x 12"x 6"
- Case quantity = 3
- Pallet Quantity = 100
- Baked Enamel Finish Enhances Any Pool
- Quality 4" Wheels For Ease of Portability
- Industrial Grade Hardware
- Made in Canada
- Fits pools up to a maximum length of 60' Long (width dependent)
- Instructional videos available at www.rockys.ca

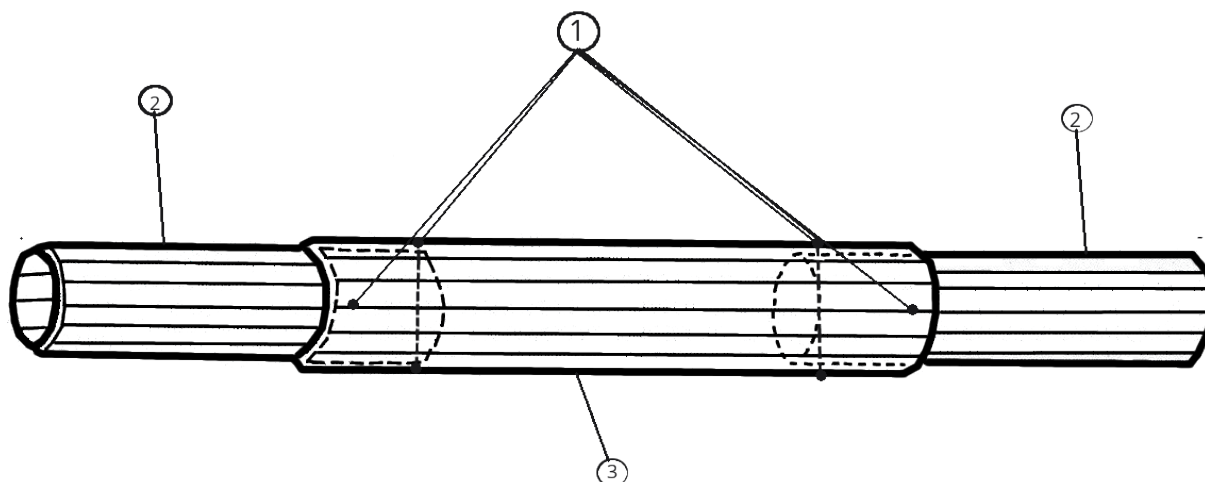


5 Portable Replacement Parts



Key	Part No.	Description
1	505	5/16" S./S. Bolt/Washer
2	547	Large Handle
3	555	Plastic Washer and Bushing Set
3	555	Plastic Washer and Bushing Set
4	513	8" Anchor Bolts
5	524	S./S. Springs and Retainers 5 inch
6	515	Drop in Anchors
6	520	8" Anchor Bolt Complete Set
7	520	8" Anchor Bolt Complete Set
8	523	3/8" Acorn Nut
9	525	3/8" Nut/Washer
10	581	4" Wheels (set of 2) with Hardware
10	585	4" Wheel Bag (set of 4) with Hardware
11	530	3 Frame
12	539	4" Hub
13	533	White Knob
14	501	Self Tap Screws (12)
15	549	Grommet Pack (12)
15	553	Grommet Pack (50)
15	554	Grommet Pack (100)
Not Shown	577	Universal Strap Kit (shown on page 22)
Not Shown	587	Vinyl Strapping 22' (shown on page 24)
Not Shown	589	Vinyl Strapping 36' (shown on page 25)
Not Shown	591	Vinyl Strapping - 150' Roll (shown on page 25)
Not Shown	593	Velcro -18" (shown on page 25)

AT-1 Residential Tube Replacement Parts



Key	Part No.	Description
1	519	Set of four 3-3/4" Bolts and four Nylock Washers
2	357	AT-1 Inner Tube
3	359	AT-1 Outer Tube
Not Shown	323	AT-1 Full Boxed Tube Set

AT-1 Tube – Product Specifications

- Extruded Aluminum Construction
- Adjusts from 15' up to 21'
- Fits pools that are up to 20' wide
- Industrial Grade Hardware
- Not Plastic
- Weight: 25 lb.
- Ships in a single box: 93"x 7"x 4"
- Pallet Quantity = 90
- Clear Anodized Satin Finish
- Easy To Assemble
- Light Weight Yet Extremely Strong
- Not Affected By Sunlight Or Freezing Cold
- Made in Canada
- Instructional videos available at www.rockys.ca